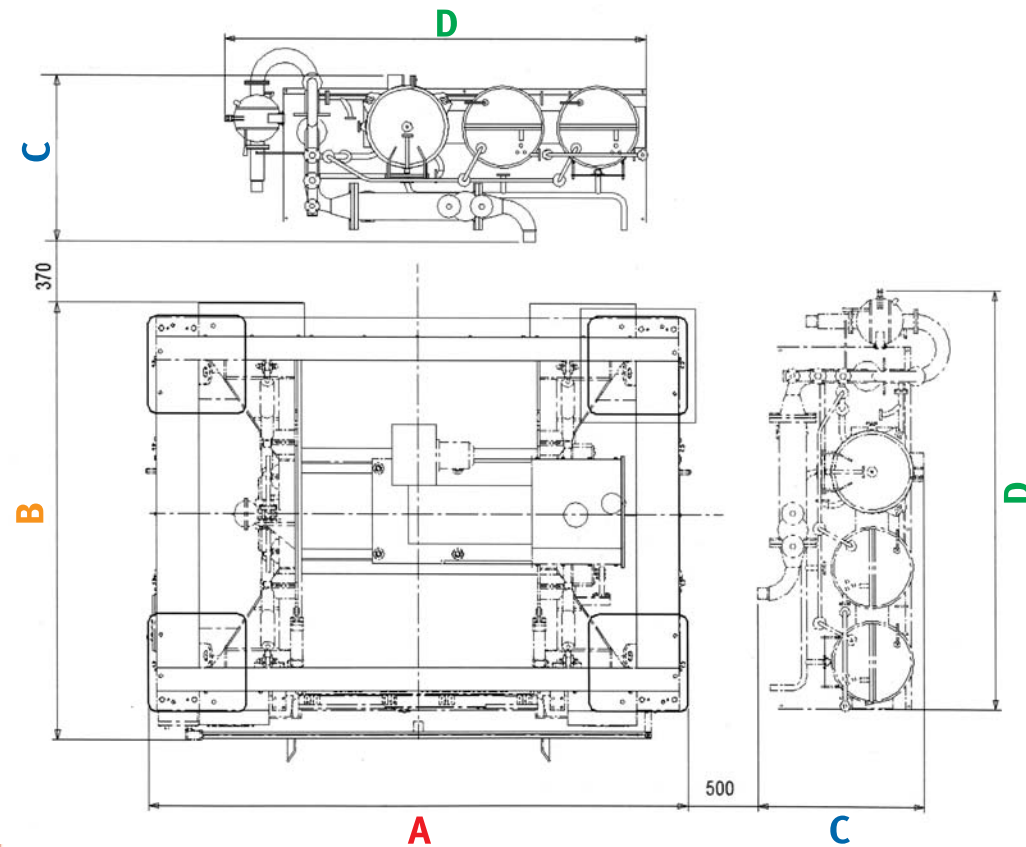


TABELLA NRP EVOLUTION

CARICO NOMINALE IN TINTURA NOMINAL LOAD	Kg.	130	200	270
NUMERO SCOMPARTI NUMBER OF COMPARTMENTS	n.	3	3	3
VOLUME DEL CESTO USABLE DRUM VOLUME	m ³	2.3	3.2	4.1
POTENZA INSTALLATA ENGAGED POWER	Kw	52	75	90
POTENZA EFFETTIVAMENTE ASSORBITA IN LINEA POWER CONSUMPTION	Kw	20	30	40
POMPA CIRCOLAZIONE BAGNO BATH CIRCULATION PUMP	Kw	4	5.5	5.5
VELOCITÀ PERIFERICA DEL CESTO IN CENTRIFUGA PERIPHERAL SPEED DURING CENTRIFUGE	mt/1"	48	48	48
LARGHEZZA E PROFONDITÀ MACCHINA MACHINE DEPTH AND LENGTH	A mm B	2890 X 2800	3300 X 2800	3760 X 2800
ALTEZZA TOTALE MACCHINA TOTAL HEIGHT	mm	3050	3050	3050
DIMENSIONI GDS MEDIO PROFONDITÀ E LARGHEZZA (INSTALLAZIONE POSSIBILE SUL RETRO O SUL LATO DESTRO DELLA MACCHINA, VEDERE DISEGNO) AVERAGE GDS DIMENSIONS LENGTH AND WIDTH (INSTALLATION POSSIBLE AT THE REAR OF ON THE RIGHT OF THE MACHINE, SEE DIAGRAM)	C mm D	1280 X 2600	1430 X 3030	1430 X 3030
PESO MACCHINA E ACCESSORI NET WEIGHT MACHINE AND ACCESSORIES	Kg.	7800 + 1000	9000 + 1100	10200 + 1100
TEMPERATURA MAX. DI ESERCIZIO MAX. WORKING TEMPERATURE	C°.	98/104	98/104	98/104

Dati indicativi - Non binding details



Flainox s.r.l.

Macchine tessili per tintoria e finissaggio - 13854 Quaregna (BI) - Italy - Via G. Leopardi, 5
Tel. +39 015.98.06.80 - Fax +39 015.94.771 - e-mail: comm@flainox-it.com - www.flainox-it.com

La facilità del colore
Essential lightness



Stampa: Litotecnica Magliola - Biella

www.modesit.it



设备视图

Macchina rotativa per tintura e centrifugazione di capi confezionati e seamless con carico/scarico facilitato

Macchina progettata per soddisfare in particolare le esigenze di mercato con l'introduzione del seamless. Questa macchina, da noi brevettata, è completamente automatizzata in tutte le sue funzioni di carico, scarico e campionatura. Può essere servita da un caricatore automatico o da una navetta per più macchine. ta soluzione tecnica all'avanguardia sono:

-
-
-
-
-
-
-
-
-

Rotary machine for dyeing and spinning of made-up and seamless garments with easy load/unloading feature

This machine has been designed to meet the specific needs of the market with the launch of the seamless garments.

The machine is fully patented by us and fully automated in all its loading, unloading and sampling functions. It may be fitted with an automatic loader or shuttle for several machines.

The clear advantages of this highly advanced solutions are as follows:

- very fast operation and no need for handling during the (critical) garment unloading stage.
- very fast loading times
- possibility of applying easy and economic automation and robotic functions during the loading/unloading stages.

Main features:

- polygonal drum (patented) divided into 3 compartments, with both shafts and bearings protected by mechanical seal devices.
- transmission is by means of single vectorial motor with self-braking inverter system, that ensures high performance and excellent energy savings..
- speeds from 1 r.p.m. up to the maximum inverter regulated spin speed.
- automatic electro-pneumatic balancing with total vibration absorption, so that no special foundations are required.
- flexibility of up to 50% of the nominal load with constant bath ratio
- Industrial PC - using Windows software – with on-line assistance modem.

自动化设备功能和染色周期由易于使用的工业用个人计算机进行控制，而且由于该计算机应用Windows软件因此易于查阅。

具有易于装料/卸料特征的缝制和无缝服装滚筒式染色及脱水设备

随着无缝服装投放市场，该设备的设计已符合市场的特殊需求。

我们已完全获得该设备的专利权并且在装料、卸料和取样功能方面已完全实现自动化。可配备自动装料机或自动纺织梭以满足若干台设备的需要。

该套非常先进的解决方案具有如下显著优势:

具有非常快的运行速度并且在（关键的）服装卸料台无需人工处理。

非常快的装料时间

在装料/卸料台可应用易于操作和经济可行的自动化及机器人功能 主要特征:

多边形转鼓（已获得专利）分为三个隔室，配有受机械密封装置保护的轴和轴承。

单矢量电机传动，配有变频自动化制动系统，确保达到最高性能水平和卓越的节能性能。

速度范围从 1 rpm 到最大变频调节旋转速度。

自动化电动气动平衡装置，配有总体减震装置。因此无需特殊设备基础。

采用固定浴比，灵活调整幅度可达到标准负荷的50%。

工业用个人计算机——采用 Windows

软件——配备在线辅助调制解调器。

自动化卸料台