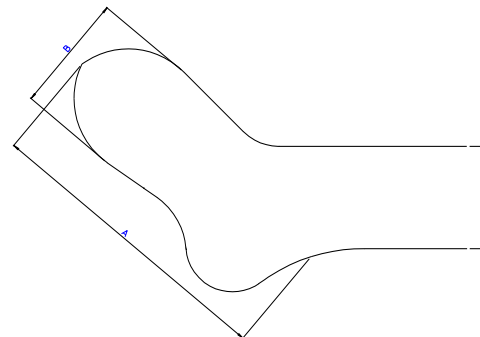


Taglia	inch	A	B	C
000 B	inch	4.429	1.929	1.751
00 B	inch	4.921	2.086	1.87
0 B	inch	5.413	2.263	1.988
1 B	inch	5.925	2.421	2.106
2 C	inch	6.437	2.578	2.244
4 C	inch	6.909	2.755	2.362
6 C	inch	7.421	2.933	2.48
8 C	inch	7.913	3.11	2.618
10 C	inch	8.405	3.287	2.736
12 C	inch	8.897	3.464	2.854
14 C	inch	9.389	3.641	2.972
9 W	inch	9.901	3.799	3.09
9 1/2 W	inch	10.393	3.976	3.228
10 M	inch	10.885	4.133	3.346
10 1/2 M	inch	11.378	4.212	3.346
11 M	inch	11.87	4.27	3.346
11 1/2 M	inch	12.362	4.35	3.346
12 N	inch	12.854	4.429	3.346
12 1/2 M	inch	13.346	4.507	3.346
13 M	inch	13.838	4.586	3.346

Taglia	mm	A	B	C
000 B	mm	112.5	49	44.5
00 B	mm	125	53	47.5
0 B	mm	137.5	57.5	50.5
1 B	mm	150.5	61.5	53.5
2 C	mm	163	65.5	57
4 C	mm	175.5	70	60
6 C	mm	188.5	74.5	63
8 C	mm	201	79	66.5
10 C	mm	213.5	83.5	69.5
12 C	mm	226	88	72.5
14 C	mm	238.5	92.5	75.5
9 W	mm	251.5	96.5	78.5
9 1/2 W	mm	264	101	82
10 M	mm	276.5	105	85
10 1/2 M	mm	289	107	85
11 M	mm	301.5	108.5	85
11 1/2 M	mm	314	110.5	85
12 N	mm	326.5	112.5	85
12 1/2 M	mm	339	114.5	85
13 M	mm	351.5	116	85



NO.			
REV.			
PROF.			
DESCRIZIONE			
Data: 25/03/98	MPz.	MATERIALE: ALLUMINIO	
Scale 1:1			
Particolari FORME DI STRATURA STANDARDS			
Particolari STANDARD BOARDING FORMS			
Particolari FORMES DE REPASSAGE STANDARDS			
GHIBLI			

IL PRESENTE DOCUMENTO E' DI PROPRIETA' RISERVATA DELLA VEDOVA DI N. GHIBLI